



FOR IMMEDIATE RELEASE

SUITE SPOT FIT FOR THE QUEEN

Waikiki Beach Marriott Resort & Spa Pays Tribute to Queen Lili‘uokalani and Hawai‘i with Inspired Suite

WAIKIKI, OAHU – April 30, 2009 – Waikiki Beach Marriott Resort & Spa unveiled the crowning touch to its \$28 million renovation at the oceanfront Kealohilani Tower with a dedication ceremony on Wednesday for the newly named Queen Lili‘uokalani Suite overlooking famed Waikiki Beach.

In keeping with the resort’s efforts to preserve and perpetuate the Queen’s royal legacy, Waikiki Beach Marriott redesigned and renamed the one-bedroom presidential suite in honor of Hawai‘i’s beloved monarch.

“The land on which our resort is located has historical ties to the Queen and it is only befitting that we seek inspiration from her legacy,” said Chris Tatum, general manager of Waikiki Beach Marriott Resort & Spa. “Our continued working relationship with the Queen Lili‘uokalani Trust Foundation and the Queen Lili‘uokalani Children’s Center (QLCC) allows us to benefit from the resources to create a royal sense of place and feel at Waikiki Beach Marriott,” said Tatum.

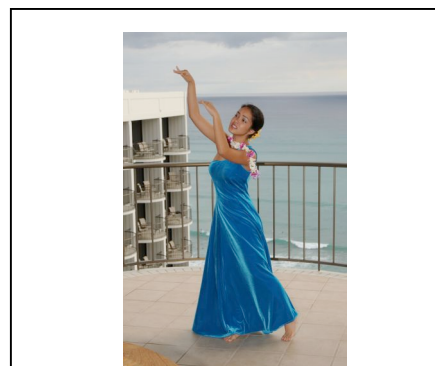
Queen Lili‘uokalani Suite

Located on the top 25th floor the one-bedroom Queen Lili‘uokalani Suite offers a majestic view of Waikiki Beach. The spacious suite provides 1,880 square feet of flexible interior living space, and a 520-square-foot *lanai* (balcony). The Queen Lili‘uokalani Children’s Center donated to Waikiki Beach Marriott Resort & Spa

a portrait of the Queen taken during her reign, which is displayed in the suite foyer. The Queen loved music and attended Queen Victoria’s Golden Jubilee in 1887 whereby she composed “The Queen’s Jubilee”. In tribute, the music sheets to this song are also displayed in the suite. The Queen composed more than 150 songs.



QLCC students Davit Soo, Brittni Au, and Lolena Aldosa alongside Cultural Advisor Waianuheha AhQuin performed the Hamohamo ‘oli (chant) to Queen Lili‘uokalani. The students are graduates of Waikiki Beach Marriott’s internship program.



Tia Paoa, beneficiary of the Queen and former Miss Keiki Hula, danced a special tribute titled, “Paoakalani.”

The Inspiration

The newly designed suite blends splashes of contemporary accents reminiscent of the 18th and 19th centuries and the Victorian Era.

Highlights include:

- Vibrant fuchsia-printed daybed and two leafy vine-printed slipper chairs with cyan blue accent pillows create a gathering place welcoming company for talk story.
- Foliage-printed carpet inspired by the Queen's love of flowers and plants.
- Expansive *lanai* emulates the latest in design with natural teak wood furnishings that induce the spirit of the islands contrasted by dark rattan for a contemporary feel. A custom-made rug with circular motif emphasizes a residential feel.
- Yellow window coverings that represent the color of the Queen's reign.
- Dark-stained mahogany furniture and eight-top rectangular dining table with out-turned legs and striped upholstered chairs.
- Granite stone top buffet tables and television console with remote jack pack to easily connect digital technology (i.e video camera, laptop, and iPod etc.) to the television.
- 42-inch LG television with high-definition signal recessed into the living room wall.
- Desk chair with a tightly knitted and layered weave and chenille texture highlighted by creamy yellow tones.
- Seven-inch wood wall base lining the suite conjures design elements from the 18th century period.
- Frameless glass shower door and Kohler bathroom fixtures.

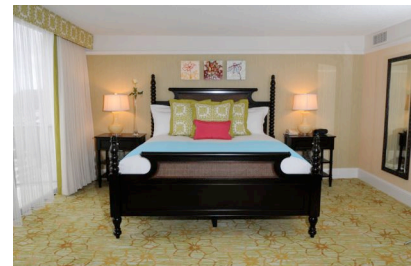
Artistic Presence

Distinctive art pieces were selectively chosen to adorn the Queen Lili'uokalani Suite. Key pieces in the living space include:

- **“Wave”** – This Kerry Vander Meer piece, backdrop to the focal gathering area upon entry, was inspired by nature and the artist's surroundings.
- **“Girl Who Paints Flowers”** – Three dimensional and lace-like, indicative of Hawaiian handcrafting. Piece by Ana Maria Hernando.
- **“Rising Tides 1 and 2”** – Organic and timeless images of palm trees by Patrick Atkinson with intricate wood carved frames invoking Hawaiian craftsmanship.
- **“Seashells 1, 2, 3, and 4”** – Large mirror in the dining area is framed by a four-piece series of items from the sea by Mac Monagle.

The Queen's Sanctuary

- Inviting seating area for comfort and relaxation with gold flower-print accent floor lamp.
- Plantation-style four-poster King bed with green Hawaiian quilt-inspired shams and cyan throw framed by capiz shell lamps and wood nightstands.



-more-

- Three floral-inspired art pieces by Ana Maria Hernando located above the headboard. The flowers appear as layers in Hernando's paintings as she sees the flowers unfolding.

A century ago, the land on which the Waikiki Beach Marriott Resort & Spa now stands was once the summer home of Queen Lili'uokalani. Waikiki Beach Marriott Resort & Spa honored the Queen by renaming its two towers to represent her two homes, Kealohilani and Paoakalani (literally translated as "heavenly fragrance"). The resort continues to perpetuate her legacy by providing guests with authentic Hawaiian music by Hawai'i's legendary musicians, Hawaiian artifacts displayed throughout the hotel, cultural activities and royal Hawaiian hospitality.

###

WAIKIKI BEACH MARRIOTT RESORT & SPA fronts the best stretch of Waikiki Beach. Conveniently located in the heart of Waikiki, the hotel offers 1,310 refurbished guest rooms and suites with private lanai providing spectacular views of world-famous Diamond Head and Waikiki Beach. Other amenities include Kuhio Beach Grill, featuring the best in Pacific Rim cuisine; Sansei Seafood Restaurant & Sushi Bar and d.k Steak House; Arancino di Mare Italian Restaurant; contemporary sushi bar; Moana Terrace, offering live Hawaiian entertainment nightly; Seattle's Best Coffee; Paul Brown's Spa Olakino * Salon; Faith Riding Company Surf School; two freshwater, heated swimming pools; 10-person whirlpool; 24-hour fitness facility; business center with 24-hour Internet access; high-speed and wireless Internet access throughout the resort's guest rooms and public spaces; shops and boutiques; and Hawaiian cultural activities. For more information, visit www.marriottwaikiki.com.

Editor's Note: JPG images available upon request.

For More Information, Contact:

Bernie Caalim or Erin Kinoshita

1003 Bishop Street, 9th Floor

Honolulu, HI 96813-6429

(808) 531-0244 phone

(808) 521-7163 fax

E-mail: bernie.caalim@mwc-anthology.com or

erin.kinoshita@mwc-anthology.com