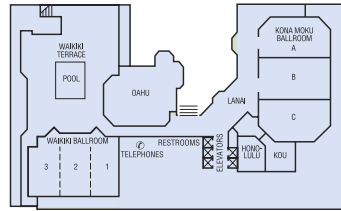




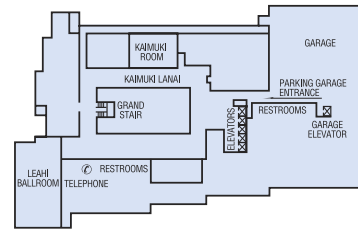
BRILLIANT CHOICE, WAIKIKI

**WAIKIKI BEACH MARRIOTT RESORT & SPA**

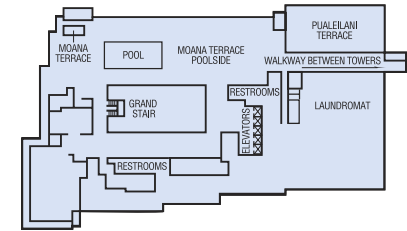
2552 Kalakaua Avenue, Honolulu, HI 96815-3699  
 Group Sales (866) 516 5381 • Fax (808) 679 0293  
 Phone (808) 921 5185 • Fax (808) 921 5119  
 marriottwaikiki.com • marriothawaii.com/groups



**Paoakalani Tower**  
Third Floor



**Kealohilani Tower**  
Second Floor



**Kealohilani Tower**  
Third Floor

Solar by day. Electric and lunar at night. The energy of Waikiki is infectious. Our ocean invigorates. Our shopping and nightlife scintillate. There will be those among you up at sunrise to run the slopes of Diamond Head and others, long after each evening's function ends, out for a stroll barefoot on the beach. Expect a carry-over of the high energy to each day's business at hand when you host your meeting at the Waikiki Beach Marriott Resort & Spa.

Indoor Meeting & Function Space	Dimensions (W x L x H)	Square Footage	Theater Capacity	Schoolroom Capacity	Banquet Capacity	Reception Capacity	Conference Capacity	Dinner Dance	Exhibit 8 x 10
<b>Kona Moku Ballroom</b>									
(16 ft. Ctr.)	111 x 63 x 13	6,993	800	400	600	1,000	-	550	39
Salon A	42 x 63 x 13	2,546	275	150	210	380	52	-	13
Salon B	33 x 63 x 13	2,079	250	140	170	320	52	-	14
Salon C	36 x 63 x 13	2,104	225	110	160	300	52	-	12
Lanai	27 x 50 x 11	1,200	-	-	-	-	-	-	-
<b>Waikiki Ballroom</b>	<b>77 x 53 x 13</b>	<b>3,993</b>	<b>450</b>	<b>200</b>	<b>340</b>	<b>600</b>	-	<b>300</b>	<b>24</b>
Salon 1	25 x 44 x 13	1,222	125	60	100	180	46	-	8
Salon 2	26 x 53 x 13	1,427	125	60	90	200	46	-	8
Salon 3	25 x 53 x 13	1,344	125	60	100	200	46	-	8
<b>Leahi Ballroom</b>	<b>49 x 102 x 11</b>	<b>4,481</b>	<b>650</b>	<b>350</b>	<b>400</b>	<b>650</b>	-	<b>350</b>	<b>31</b>
<b>Meeting Rooms</b>									
Kou Room	22 x 25 x 10	550	50	30	40	40	24	-	-
Honolulu Room	22 x 25 x 10	550	50	30	40	40	24	-	-
Milo I (Not Shown)	33 x 30 x 8	788	55	33	40	50	26	-	-
Milo II (Not Shown)	34 x 27 x 9	735	50	30	40	50	24	-	-
Milo III (Not Shown)	47 x 19 x 8	926	90	35	50	50	30	-	-
Milo IV (Not Shown)	35 x 20 x 9	553	50	30	40	40	24	-	-
Milo V (Not Shown)	47 x 25 x 9	770	55	33	40	40	26	-	-
Milo Boardroom (Not Shown)	20 x 20 x 9	400	40	20	30	30	15	-	-
Oahu Room	23 x 55 x 12	1,312	150	-	120	200	-	-	-
Kaimuki Room	40 x 49 x 10	1,960	200	80	120	100	42	90	12
Kaimuki Lanai	23 x 49 x 10	1,127	-	-	200	-	-	-	-
<b>Waikiki Terrace</b>	<b>92 x 70</b>	<b>4,500</b>	-	-	-	<b>400</b>	-	-	-
<b>Moana Terrace</b>	<b>33 x 58</b>	<b>1,914</b>	-	-	<b>50</b>	<b>100</b>	-	-	-
<b>Moana Terrace Poolside</b>	<b>50 x 400</b>	<b>20,000</b>	-	-	<b>400</b>	<b>1,000</b>	-	-	-
<b>Pualeilani Terrace</b>	<b>50 x 158</b>	<b>7,900</b>	-	-	<b>400</b>	<b>600</b>	-	-	-

**LOCATION**

Located on the Diamond Head end of Waikiki, across from the beach, a 10-mile drive from Honolulu Airport

**DIRECTIONS**

Exit terminal or car rental area • Take H-1 East to Honolulu • Exit at King St. off ramp (25A) • Turn right onto Kapahulu Ave., continue for 2 miles • Turn right on Kuhio Ave. • Turn left at second traffic light onto Ohua Ave. • Hotel entrance is located on the left

**ACCOMMODATIONS**

1,310 rooms, including 135 suites • Check-in 3:00 pm Check-out 11:00 am • Connecting rooms ADA rooms • Roll-in shower rooms All rooms are non-smoking • Cribs available

**RESTAURANTS & LOUNGES**

**Arancino di Mare** Al fresco dining. Specialties include Italian pasta and pizza  
 • Open for breakfast, lunch and dinner  
 • Dress: Casual • Phone: (808) 931 6273  
**d.k Steak House** A true American steakhouse. Serves succulent dry-aged steaks cooked to perfection  
 • Open for dinner • Dress: Casual  
 • Phone: (808) 931 6280  
**Kuhio Beach Grill** Continental cuisine. Famous for their prime rib and nightly themed buffets  
 • Open for breakfast and dinner • Dress: Casual  
 • Phone: (808) 921 5171

**Moana Terrace** Poolside fare and live entertainment

• Open for lunch and dinner • Dress: Casual  
 • Phone: (808) 922 6611

**Sansei Seafood Restaurant & Sushi Bar**

Local favorite serving award-winning Asian-Pacific Rim cuisine  
 • Open for dinner • Dress: Casual  
 • Phone: (808) 931 6286

**Seattle's Best Coffee** Gourmet coffees, teas and light fare

• Two locations  
 • Dress: Casual • Phone: (808) 922 6611

**RECREATION & LEISURE**

2 heated swimming pools • 12-person hot tub • 24-hour fitness center • Surfing • Boogie Boarding • Snorkeling • Scuba diving • Tennis • Golf • Hiking • Dinner cruises • Whale watching cruises (Winter)  
 • Waikiki's renowned shopping, entertainment and nightlife

**GUEST SERVICES**

Concierge desk • Shopping arcade with over 20 retail stores • Hospitality lounge • 24-hour full-service business center • High-speed Internet access • Complimentary towels for beach use  
 • Multilingual guest relations staff  
 • Spa Olakino • Salon • Surf school • Car rental desk

**MEETING & BANQUET FACILITIES**

3 ballrooms & 10 meeting rooms • Conference facilities • Over 50,000 sq. ft. of indoor/outdoor function space • Creative catering & theme parties • State-of-the-art audiovisual system

**NEARBY ATTRACTIONS**

Waikiki Beach • Diamond Head Crater • Honolulu Zoo • Waikiki Aquarium • Iolani Palace • Pearl Harbor • Waikiki's shopping & entertainment • Polynesian Cultural Center • North Shore